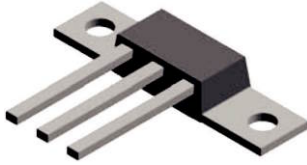


Schottky Rectifier New Generation 3 D-61 Package, 2 x 55 A

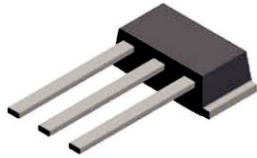
VS-115CNQ015APbF



D-61-8



VS-115CNQ015ASMPbF



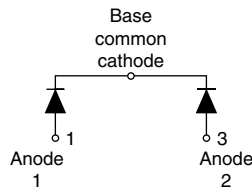
D-61-8-SM



VS-115CNQ015ASLPbF



D-61-8-SL



FEATURES

- 125 °C T_J operation ($V_R < 5$ V)
- Center tap module
- Optimized for OR-ing applications
- Ultralow forward voltage drop
- High frequency operation
- Guard ring for enhanced ruggedness and long term reliability
- High purity, high temperature epoxy encapsulation for enhanced mechanical strength and moisture resistance
- New fully transfer-mold low profile, small footprint, high current package
- Compliant to RoHS directive 2002/95/EC
- Designed and qualified for industrial level



RoHS*
COMPLIANT

DESCRIPTION

The center tap Schottky rectifier module has been optimized for ultra low forward voltage drop specifically for the OR-ing of parallel power supplies. The proprietary barrier technology allows for reliable operation up to 125 °C junction temperature. Typical applications are in parallel switching power supplies, converters, reverse battery protection, and redundant power subsystems.

PRODUCT SUMMARY

$I_{F(AV)}$	2 x 55 A
V_R at $T_J = 100$ °C	15 V

MAJOR RATINGS AND CHARACTERISTICS

SYMBOL	CHARACTERISTICS	VALUES	UNITS
$I_{F(AV)}$	Rectangular waveform	110	A
V_{RRM}		15	V
I_{FSM}	$t_p = 5$ μ s sine	5050	A
V_F	55 Apk, $T_J = 75$ °C (per leg)	0.33	V
T_J	Range	- 55 to 125	°C

VOLTAGE RATINGS

PARAMETER	SYMBOL	TEST CONDITIONS	VS-115CNQ015APbF	UNITS
Maximum DC reverse voltage	V_R	$T_J = 100$ °C	15	V
Maximum working peak reverse voltage	V_{RWM}	$T_J = 125$ °C	5	

* Pb containing terminations are not RoHS compliant, exemptions may apply

ABSOLUTE MAXIMUM RATINGS					
PARAMETER	SYMBOL	TEST CONDITIONS		VALUES	UNITS
Maximum average forward current See fig. 5	$I_{F(AV)}$	50 % duty cycle at $T_C = 112\text{ }^\circ\text{C}$, rectangular waveform		55	A
				110	
Maximum peak one cycle non-repetitive surge current per leg See fig. 7	I_{FSM}	5 μs sine or 3 μs rect. pulse	Following any rated load condition and with rated V_{RRM}	5050	A
		10 ms sine or 6 ms rect. pulse		830	
Non-repetitive avalanche energy per leg	E_{AS}	$T_J = 25\text{ }^\circ\text{C}$, $I_{AS} = 2\text{ A}$, $L = 4.5\text{ mH}$		54	mJ
Repetitive avalanche current per leg	I_{AR}	Current decaying linearly to zero in 1 μs Frequency limited by T_J maximum $V_A = 3 \times V_R$ typical		2	A

ELECTRICAL SPECIFICATIONS					
PARAMETER	SYMBOL	TEST CONDITIONS		VALUES	UNITS
Maximum forward voltage drop per leg See fig. 1	$V_{FM}^{(1)}$	55 A	$T_J = 25\text{ }^\circ\text{C}$	0.37	V
		110 A		0.46	
		55 A	$T_J = 75\text{ }^\circ\text{C}$	0.33	
		110 A		0.43	
Maximum reverse leakage current per leg See fig. 2	$I_{RM}^{(1)}$	$T_J = 25\text{ }^\circ\text{C}$	$V_R = \text{Rated } V_R$	20	mA
		$T_J = 100\text{ }^\circ\text{C}$		1200	
		$T_J = 100\text{ }^\circ\text{C}$	$V_R = 12\text{ V}$	900	
		$T_J = 100\text{ }^\circ\text{C}$	$V_R = 5\text{ V}$	540	
Maximum junction capacitance per leg	C_T	$V_R = 5\text{ V}_{DC}$ (test signal range 100 kHz to 1 MHz), $25\text{ }^\circ\text{C}$		5500	pF
Typical series inductance per leg	L_S	Measured lead to lead 5 mm from package body		5.5	nH
Maximum voltage rate of change	dV/dt	Rated V_R		10 000	V/ μs

Note

(1) Pulse width < 300 μs , duty cycle < 2 %

THERMAL - MECHANICAL SPECIFICATIONS					
PARAMETER	SYMBOL	TEST CONDITIONS		VALUES	UNITS
Maximum junction temperature range	T_J			- 55 to 125	$^\circ\text{C}$
Maximum storage temperature range	T_{Stg}			- 55 to 150	
Maximum thermal resistance, junction to case per leg	R_{thJC}	DC operation See fig. 4		0.5	$^\circ\text{C/W}$
Maximum thermal resistance, junction to case per package		DC operation		0.25	
Typical thermal resistance, case to heatsink (D-61-8 only)	R_{thCS}	Mounting surface, smooth and greased Device flatness < 5 mils		0.30	
Approximate weight				7.8	g
				0.28	oz.
Mounting torque (D-61-8 only)	minimum			40 (35)	kgf · cm (lbf · in)
	maximum			58 (50)	
Marking device		Case style D-61		115CNQ015A	
		Case style D-61-8-SM		115CNQ015ASM	
		Case style D-61-8-SL		115CNQ015ASL	

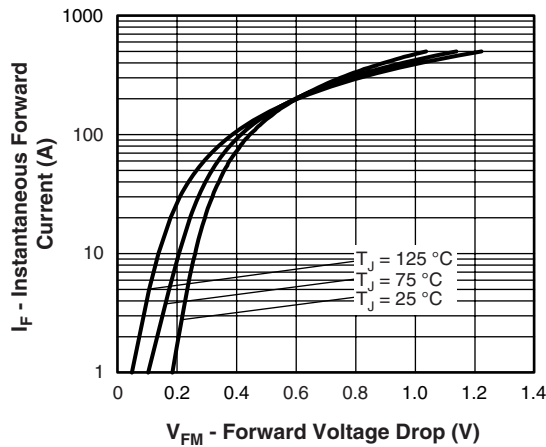


Fig. 1 - Maximum Forward Voltage Drop Characteristics (Per Leg)

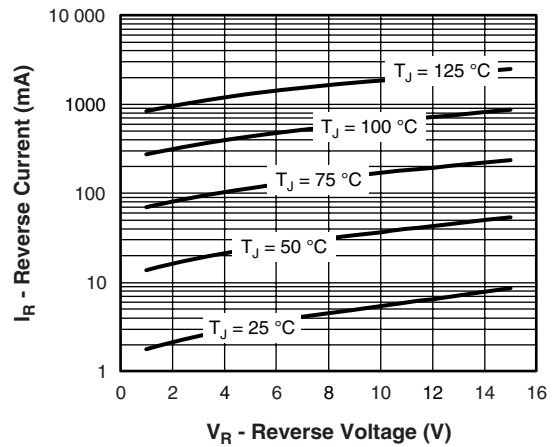


Fig. 2 - Typical Values of Reverse Current vs. Reverse Voltage (Per Leg)

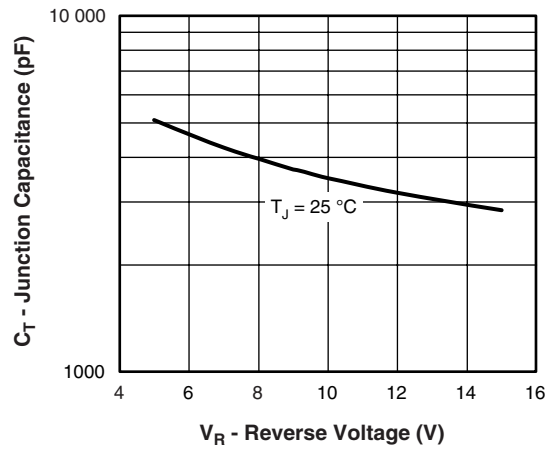


Fig. 3 - Typical Junction Capacitance vs. Reverse Voltage (Per Leg)

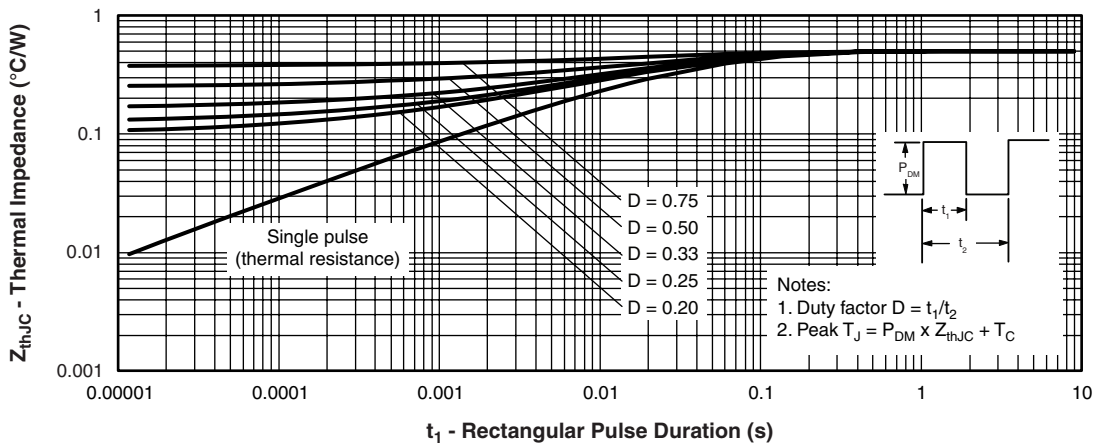


Fig. 4 - Maximum Thermal Impedance Z_{thJC} Characteristics (Per Leg)

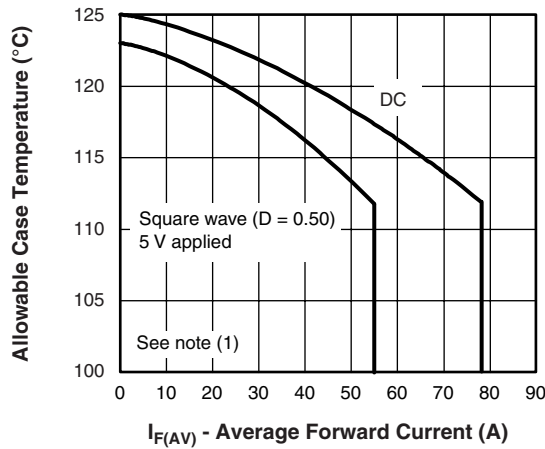


Fig. 5 - Maximum Allowable Case Temperature vs. Average Forward Current (Per Leg)

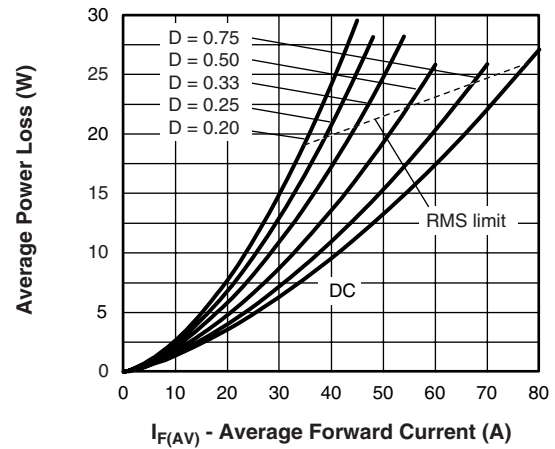


Fig. 6 - Forward Power Loss Characteristics (Per Leg)

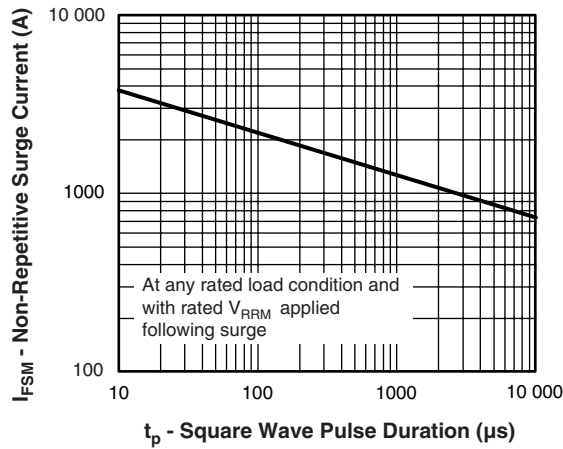


Fig. 7 - Maximum Non-Repetitive Surge Current (Per Leg)

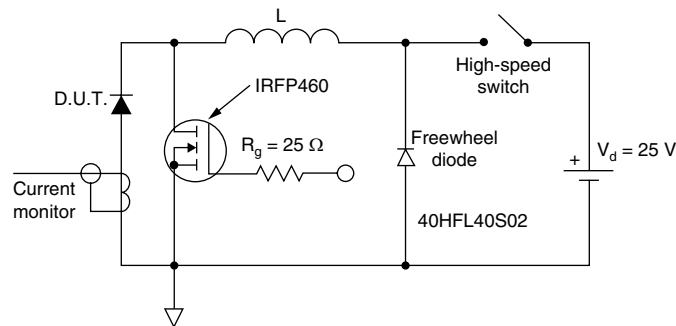


Fig. 8 - Unclamped Inductive Test Circuit

Note

- (1) Formula used: $T_C = T_J - (P_d + P_{d_{REV}}) \times R_{thJC}$;
 P_d = Forward power loss = $I_{F(AV)} \times V_{FM}$ at $(I_{F(AV)}/D)$ (see fig. 6);
 $P_{d_{REV}}$ = Inverse power loss = $V_{R1} \times I_R (1 - D)$; I_R at $V_{R1} = 5$ V



VS-115CNQ015A PbF Series

Schottky Rectifier
New Generation 3 D-61 Package, 2 x 55 A

Vishay High Power Products

ORDERING INFORMATION TABLE

Device code	VS-	115	C	N	Q	015	A	PbF
	①	②	③	④	⑤	⑥	⑦	⑧

- 1** - HPP product suffix
- 2** - Current rating (110 A)
- 3** - Circuit configuration:
C = Common cathode
- 4** - Package:
N = D-61
- 5** - Schottky "Q" series
- 6** - Voltage rating (015 = 15 V)
- 7** - Package style:
 - A = D-61-8
 - ASM = D-61-8-SM
 - ASL = D-61-8-SL
- 8** -
 - None = Standard production
 - PbF = Lead (Pb)-free

Standard pack quantity: A = 10 pieces; ASM/ASL = 20 pieces

LINKS TO RELATED DOCUMENTS	
Dimensions	www.vishay.com/doc?95354
Part marking information	www.vishay.com/doc?95356



D-61-8, D-61-8-SM, D-61-8-SL

DIMENSIONS - D-61-8 in millimeters (inches)



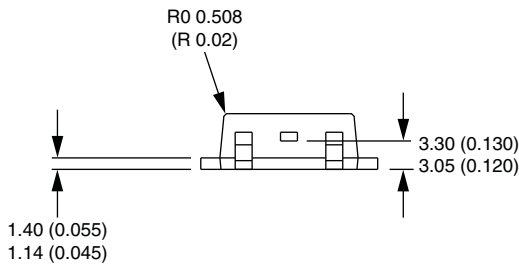


DIMENSIONS - D-61-8-SM in millimeters (inches)





DIMENSIONS - D-61-8-SL in millimeters (inches)





Disclaimer

ALL PRODUCT, PRODUCT SPECIFICATIONS AND DATA ARE SUBJECT TO CHANGE WITHOUT NOTICE TO IMPROVE RELIABILITY, FUNCTION OR DESIGN OR OTHERWISE.

Vishay Intertechnology, Inc., its affiliates, agents, and employees, and all persons acting on its or their behalf (collectively, "Vishay"), disclaim any and all liability for any errors, inaccuracies or incompleteness contained in any datasheet or in any other disclosure relating to any product.

Vishay makes no warranty, representation or guarantee regarding the suitability of the products for any particular purpose or the continuing production of any product. To the maximum extent permitted by applicable law, Vishay disclaims (i) any and all liability arising out of the application or use of any product, (ii) any and all liability, including without limitation special, consequential or incidental damages, and (iii) any and all implied warranties, including warranties of fitness for particular purpose, non-infringement and merchantability.

Statements regarding the suitability of products for certain types of applications are based on Vishay's knowledge of typical requirements that are often placed on Vishay products in generic applications. Such statements are not binding statements about the suitability of products for a particular application. It is the customer's responsibility to validate that a particular product with the properties described in the product specification is suitable for use in a particular application. Parameters provided in datasheets and/or specifications may vary in different applications and performance may vary over time. All operating parameters, including typical parameters, must be validated for each customer application by the customer's technical experts. Product specifications do not expand or otherwise modify Vishay's terms and conditions of purchase, including but not limited to the warranty expressed therein.

Except as expressly indicated in writing, Vishay products are not designed for use in medical, life-saving, or life-sustaining applications or for any other application in which the failure of the Vishay product could result in personal injury or death. Customers using or selling Vishay products not expressly indicated for use in such applications do so at their own risk and agree to fully indemnify and hold Vishay and its distributors harmless from and against any and all claims, liabilities, expenses and damages arising or resulting in connection with such use or sale, including attorneys fees, even if such claim alleges that Vishay or its distributor was negligent regarding the design or manufacture of the part. Please contact authorized Vishay personnel to obtain written terms and conditions regarding products designed for such applications.

No license, express or implied, by estoppel or otherwise, to any intellectual property rights is granted by this document or by any conduct of Vishay. Product names and markings noted herein may be trademarks of their respective owners.

Material Category Policy

Vishay Intertechnology, Inc. hereby certifies that all its products that are identified as RoHS-Compliant fulfill the definitions and restrictions defined under Directive 2011/65/EU of The European Parliament and of the Council of June 8, 2011 on the restriction of the use of certain hazardous substances in electrical and electronic equipment (EEE) - recast, unless otherwise specified as non-compliant.

Please note that some Vishay documentation may still make reference to RoHS Directive 2002/95/EC. We confirm that all the products identified as being compliant to Directive 2002/95/EC conform to Directive 2011/65/EU.